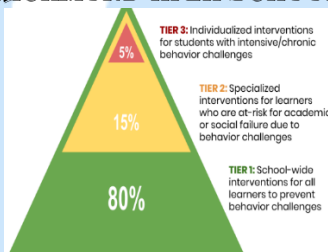


# Richmond Community Schools

35276 Division \* Richmond, Michigan 48062 \* (586) 727-3565 \* [www.richmond.k12.mi.us](http://www.richmond.k12.mi.us)

## MULTI-TIERED SYSTEMS OF SUPPORT RICHMOND HIGH SCHOOL



Academic Supports	Behavioral Supports
<b>TIER 3</b>	<b>TIER 3</b>
Special Education Support	Behavior Intervention plan
Speech/language Support	Social work
Social worker Support	Risk Assessments
Resource Room	Para Pro Support
Individual Counseling	Individualized Administrative Supports
Special Education IEP Goals	
Child Study Process	
<b>TIER 2</b>	<b>TIER 2</b>
Accelerated courses	Intentional/Priority Seating
Advanced Graphic Organizers	1 on 1 Conversations
Extra Time	Increase Parental contacts and Involvement
Online Courses	Loss of Classroom Privileges
Resource Room	Social Work/Counselor Referrals
Parental Involvement	Facebook Recognition
Peer Tutoring	Code Blue Recognition
Duel Enrollment	
AP and Honors Courses	
<b>TIER 1</b>	<b>TIER 1</b>
Strong Core Curriculum	Syllabus Reviewed
Culture of Professional Learning Community	Classroom Expectations Modeled
Differentiated Instruction	Hallway monitoring

*Guaranteed Learning for All Students!*

In compliance with Title VI of the Civil Rights Act of 1964, Title IX of the Education amendments of 1972, Section 504 of Rehabilitation Act of 1973, the Age Discrimination Act of 1975, Title II of the Americans with Disability Act of 1990, and Elliott-Larsen Civil Rights Act of 1977, it is the policy of the Richmond Community School District that no person shall, on the basis of race, color, religion, military status, national origin or ancestry, sex (including sexual orientation), disability, age (except as authorized by law,) height, weight, or marital status be excluded from participation in, be denied the benefits of, or be subjected to, discrimination during any program, activity, service or employment. Inquiries related to any nondiscrimination policies should be directed to the Superintendent, 35276 Division Road, Richmond, MI 48062, (586) 727-3565.

Before and After School assistance	Staff Greeting of Students to School and Class
CITW Based Instruction	Proactive Parent Contact
Scaffolding of Prior Knowledge	Seating Charts
Retakes	Daily Announcements



*Guaranteed Learning for All Students!*